

## A La Carte

Add to your order of any of our Selections.

### 2 lb. Bag All-Beef Gourmet Burgers

~ 8 quarter-pound patties  
#1195 ~ \$8.00

### 1 lb. Smoky Gourmet Beef Barbeque

#1702 ~ \$8.00

### 8 oz. Gourmet Tenderloin Filet

#1189 ~ \$11.00

### 12 oz. Gourmet Boneless Ribeye

#1112 ~ \$12.50

### 2 lb. Family-Size Natural Roast (Chuck or Sirloin Tip)

#1115 ~ \$10.50

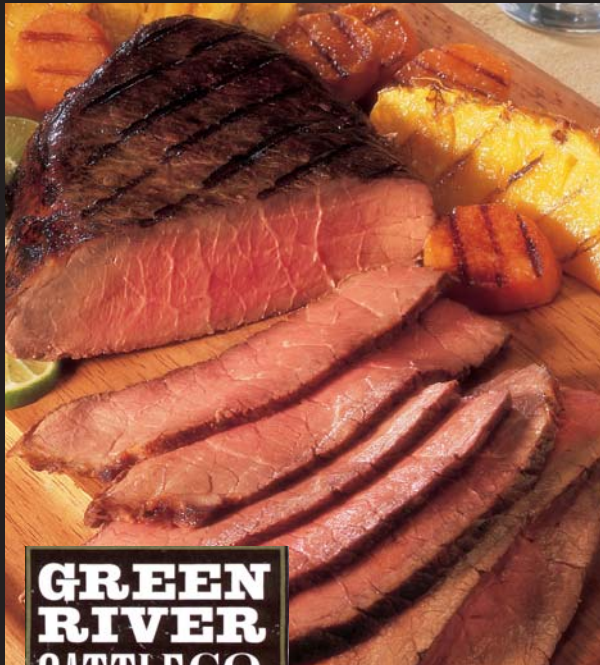
### 1 lb. GRCC Beef Bratwurst

Approx. 5 brats per lb.  
#1270 ~ \$5.50

☞ A La Carte items are shipped free when added to packages.

☞ Contact us for special orders or multi-purchase, custom packages.

☞ Product of USA.



**GREEN  
RIVER  
CATTLE CO.** ★★

**Tender & Delicious,  
All-Natural  
Gourmet Beef**

**Green River  
Gourmet Beef** is simply the best-tasting, highest-quality beef we can produce. From our small-herd feeding to our traceable source code on every package, our cattle are handled

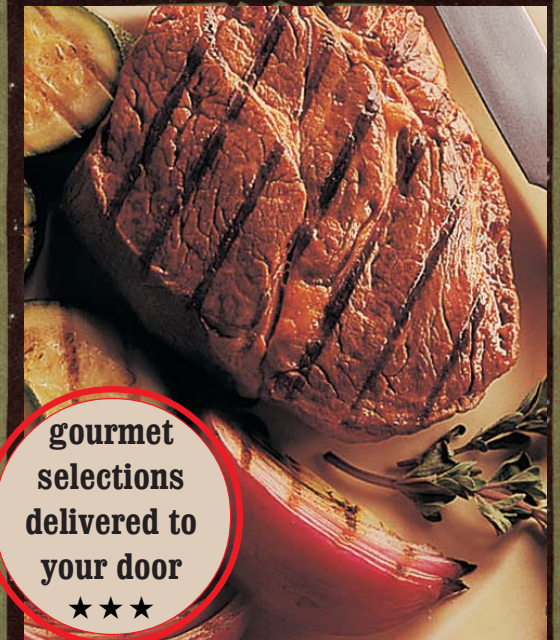
with care and produced without additional hormones or antibiotics. Our all-natural steaks, roasts and ground beef are minimally processed with no artificial ingredients. Our cattle are born, raised and harvested in Kentucky - helping our local farmers and communities. Our packages ship frozen via UPS. See order form for ordering and shipping information.



Made possible  
through support  
from the Agricultural  
Development Fund

P.O. Box 82  
Greensburg, KY 42743  
270-932-9677  
[www.greenrivercattle.com](http://www.greenrivercattle.com)

**GREEN  
RIVER  
CATTLE CO.** ★★



**Tender & Delicious,  
All-Natural  
Gourmet Beef**

For additional information please call our office  
at (270) 932-9677  
or visit our website at:  
[www.GreenRiverCattle.com](http://www.GreenRiverCattle.com)



## The Gourmet Steak Selection



- ★ Two Green River Gourmet Beef Filets  
7 to 8 ounces each
- ★ Two Tender and Delicious Ribeye Steaks  
12 ounces each
- ★ Two Green River Strip Steaks  
10 ounces each
- ★ 2 lb. Bag All-Beef Gourmet Burgers  
8 quarter-pound patties
- ★ Savory Steak Tips - 1 pound package
- ★ Smoky Gourmet Beef Barbeque  
1 pound frozen, ready to heat and eat
- ★ 1 lb. Green River Beef Bratwurst  
4 or 5 brats per lb.

#2100 ~ \$109

STEAK AND ROAST WEIGHTS ARE APPROXIMATE

## The Classic Beef Selection

- ★ Two Green River Gourmet Beef Filets  
7 to 8 ounces each
- ★ Four Tender and Delicious Sirloin Steaks  
2 - 5 ounce steaks per pkg.
- ★ 2 lb. Bag All-Beef Gourmet Burgers  
8 quarter-pound patties
- ★ Savory Steak Tips - 1 pound
- ★ Smoky Gourmet Beef Barbeque  
1 pound frozen, ready to heat and eat
- ★ 1 lb. Green River Beef Bratwurst  
4 or 5 brats per lb.

#3200 ~ \$79



## The Family Sampler



- ★ Green River Natural Roast (Chuck or Sirloin Tip) - 2 pounds
- ★ 2 lb. Bag All-Beef Gourmet Burgers  
8 quarter-pound patties
- ★ Four Green River Cubed Steaks  
2 - 5 ounce steaks per pkg.
- ★ Smoky Gourmet Beef Barbeque - 1 pound frozen, ready to heat and eat
- ★ 1 lb. Green River Beef Bratwurst  
4 or 5 brats per lb.

#4300 ~ \$59



## Variety Meal Sampler

(Local Delivery Only.)



- ★ 2 Lb. Bag All-Beef Gourmet Burgers  
8 - 1/4 Lb. Patties
- ★ 1 Lb. Gourmet Smokey Beef Barbeque  
(Fully Cooked)
- ★ 1 Lb. Beef Bratwurst
- ★ Savory Steak Tips

#5300 ~ \$27



All Beef Selections are Available in Gift Bags for Free Local Delivery.